

Callpoints

MBG914 and MBG917



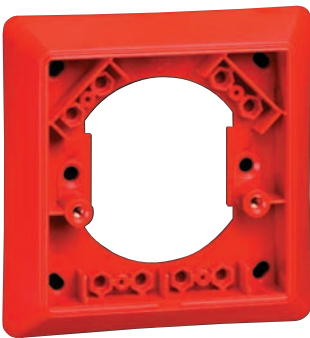
MBG917 weatherproof callpoint



MBG914 callpoint



MBGHCC protective hinged cover



MBGBEZ recessing bezel

Overview

This attractively designed, simple to install, range of callpoints have been specifically developed to be compatible with Menvier conventional fire panels.

There are 2 versions of callpoint in this range. The MBG914 which can be either surface or flush mounted and the MBG917 which is a weatherproof version.

All callpoints are supplied as standard with a frangible glass element and a test key for ease of maintenance.

A comprehensive range of accessories are available to maximise the functionality of the callpoint for particular applications.

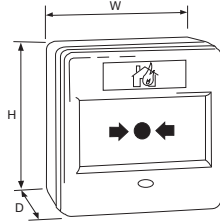
Features

- High visibility status LED
- Standard and weatherproof versions available
- Wide range of accessories
- Heavy duty terminals

Benefits

- Quick and simple to install
- Fast fit clip on front cover
- Single tool for test and access

Dimensions



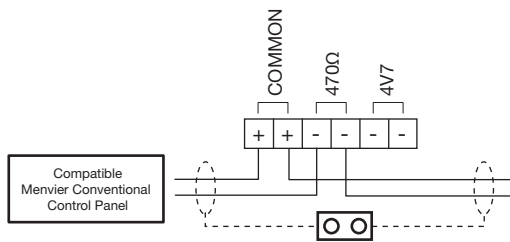
Description	H (mm)	W (mm)	D (mm)
Flush mounted	87	87	36
Surface mounted	87	87	57
Weatherproof	87	87	59

Technical Specification

Code	MBG914	MBG917
Description	Surface/flush mount callpoint	Weatherproof callpoint
Standards	EN54 Pt11	EN54 Pt11
Specification		
Operating Voltage	18V dc to 30V dc	18V dc to 30V dc
Environmental		
Operating Temperature	-10°C to +55°C	-25°C to +70°C
Humidity (Non Condensing)	0 to 93% RH	0 to 93% RH
Physical		
Construction	PC/ABS	PC/ABS
Colour	Red	Red
Dimensions (H x W x D)	87mm x 87mm x 57mm (36mm flush)	87mm x 87mm x 59mm
Weight	0.2kg	0.2kg
Ingress Protection	IP42	IP65
Compatibility		
Suitable for use with	Menvier conventional fire systems	Menvier conventional fire systems

Standard Connection

MBG914 / MBG917



WARNING:
Do NOT use high voltage testers if ANY equipment is connected to the system.

Screen (Earth) must be continuous along entire length of cable

NOTE:
470Ω connection is for standard Menvier conventional panels.
4V7 connection can be used with MF9300 to enable certain features on the Menvier MF9300 range of control panels.

Installation

1. Surface callpoint has standard rear BESA fixing facilities. In addition, back box can accept top or bottom surface entry cables. Surface callpoint can also be flush mounted.
2. Callpoint has test facility via special test key to prevent unauthorised operation.
3. Insertion of test key for test purposes and for cover removal is at bottom of callpoint to facilitate ease of access when mounted next to door architrave.
4. Test key is dual function, used to test callpoint operation by simulating activation and also to allow removal of clip on cover to gain access to element.
5. Element is held in place by clip on self locking cover which can only be removed by use of a special tool (callpoint test key).
6. Separate zone in and zone out terminals are provided for all connections.
7. Surface/flush callpoints are IP42, weatherproof is IP65.

Accessories

- Semi recess bezel
- Spacer plates
- Hinged clear cover
- Resettable plastic element
- Replacement test key
- Replacement glass elements
- Earth continuity links

User Interface

1. To enable quick and simple installation, callpoints use a fast fit self locking clip on front cover which is very simple to fit, but once in place, can only be removed by use of a special key (supplied).
2. Callpoint is triggered by pressing against the element.

Product Codes

Code	Description
MBG914	Conventional surface/flush callpoint
MBG917	Conventional weatherproof callpoint
MBGHCC	Protective hinged cover
MBGSP	Spacer plates (pack of 10)
MBGBEZ	Recessing bezels (pack of 10)
MBGREKIT	Resettable element kit (pack of 10)
MBG118	Spare break glasses (pack of 5)
MBG119	Earth continuity links (pack of 5)
MFBGKEY3	Callpoint keys (pack of 10)